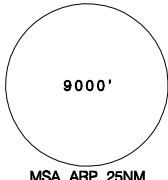
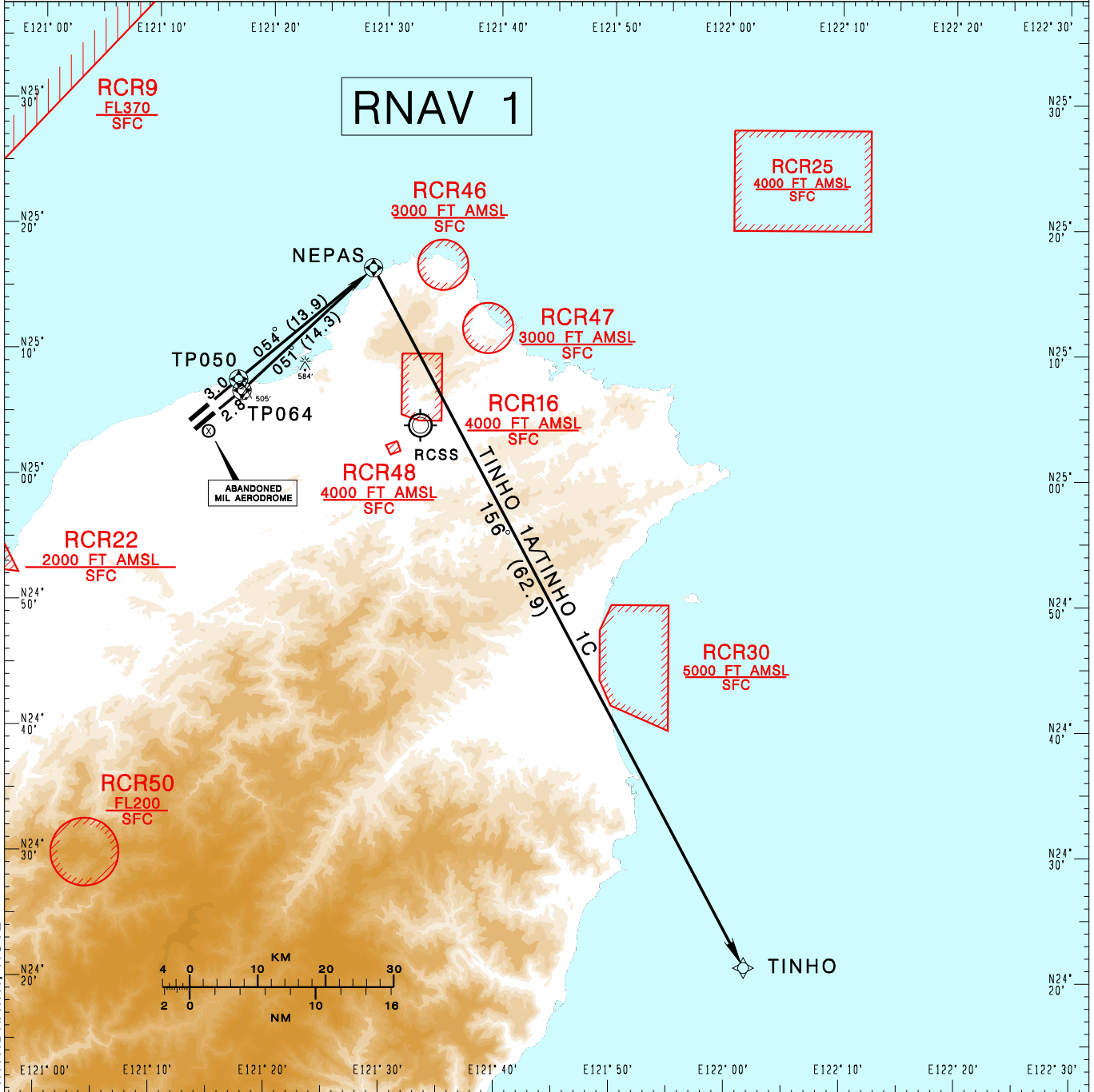


臺灣桃園國際機場
TAIPEITAIWAN TAOYUAN INTL AD

RCTP SID
TINHO 1A RNAV(RWY05R)
TINHO 1C RNAV(RWY05L)

TAIPEI APP 125.1 128.5	TAIPEI TWR 118.7 129.3	ATIS 127.6	VAR 5° W		
Apt Elev: 108'		Trans Level: FL130			Trans Alt: 11,000'
BEARINGS ARE MAGNETIC; DISTANCES ARE NAUTICAL MILES; ELEVATIONS, HEIGHTS IN FEET					



CHANGES: RCR49 COMPLETELY WITHDRAWN: NOTE

TINHO ONE ALFA RNAV DEPARTURE
Climb on RWY HDG until leaving 600ft, then direct to TP064, NEPAS, then to TINHO, cross NEPAS at or above 4500ft.

TINHO ONE CHALI RNAV DEPARTURE
Climb on RWY HDG until leaving 600ft, then direct to TP050, NEPAS, then to TINHO, cross NEPAS at or above 4500ft.

NOTE
1. Minimum climb gradient required:
RWY 05L:
4.1%(250 ft/NM) until NEPAS.
RWY 05R:
4.7%(286 ft/NM) until NEPAS.
2. ATS surveillance required.